

# BDWOF-DS | Tub Docking Station

## Freestanding Tub Installation Kit



Page 269

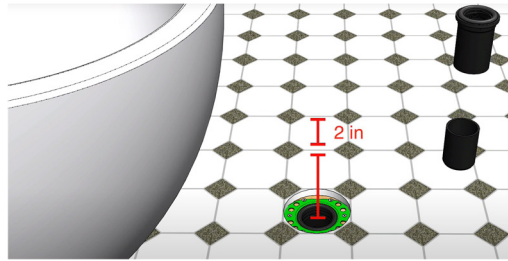
### Selling Points

- ◆ Much easier to install than all competitors
- ◆ No need to place tub on it's side (*eliminates possibility of tub damage*)
- ◆ Removeable drain stopper
  - ◇ Allows for easier cleaning & snaking clogs
  - ◇ Removeable stopper acts as a hair catcher
  - ◇ If trim needs to be changed, no need to completely uninstall the tub

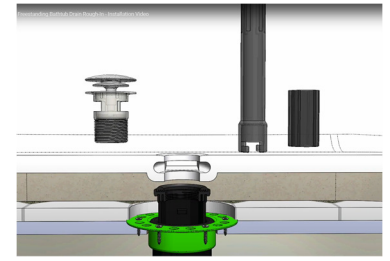
### Installation Highlights



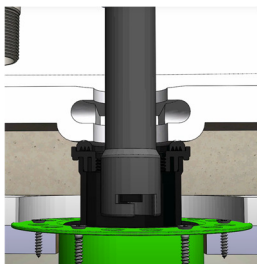
Step 1: Install deck flange



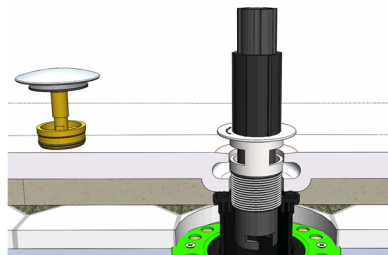
Step 2: Measure distance from bottom of the tub to the floor; cut tail piece to length



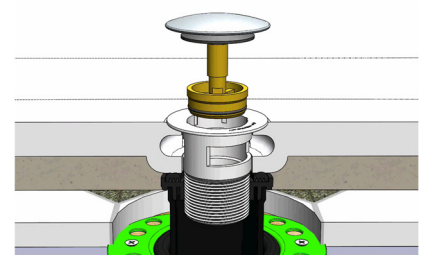
Step 3: Slide tub and align drain holes



Step 4: Using the long tool, pull the tail piece to create seal underneath the tub



Step 5: Thread the trim through the drain hole and tighten with smaller tool



Step 6: Install drain stopper