

Decorative Lavatory Traps

Section Contents

Duet Finishes - Bottle Trap **227 - 228**

Bottle Traps **229 - 230**

P-Traps **231 - 234**

Lavatory Trap Parts **235 - 236**

Lavatory Space Saving Trap **236**

Fixture Planning Diagrams

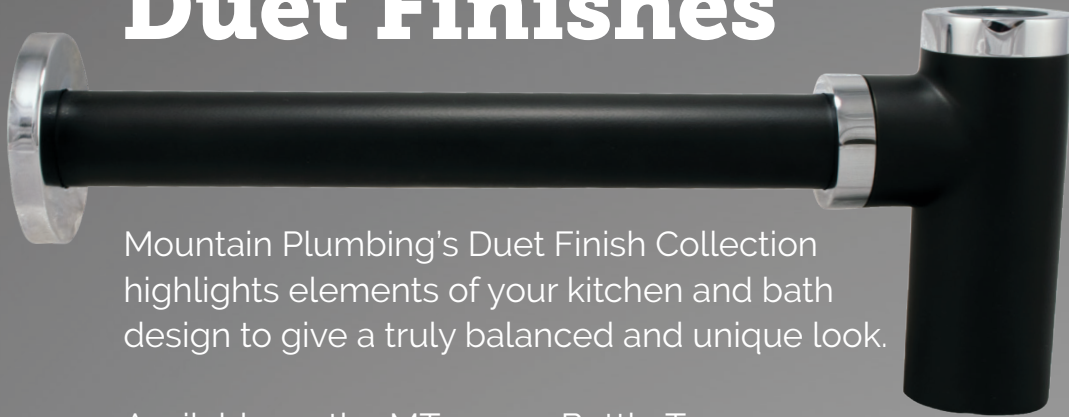
Use the bath sink and pedestal sink fixture planning diagram to simplify your product selection and complete your design.

Bath Sink Fixture Planning Diagram **16**

Pedestal Sink Fixture Planning Diagram **17**



Bottle Trap Duet Finishes



Mountain Plumbing's Duet Finish Collection highlights elements of your kitchen and bath design to give a truly balanced and unique look.

Available on the MT2000-2 Bottle Trap
Page 230

Ordering Duet Products

All Duet products come with Matte Black as the base finish.
To order please use the following three step instructions:

1. Find the Product You Want in a Duet Finish			2. Select Accent Finish & Use Model # Below to Order			
Standard Model #	Product Name	Page	Brushed Nickel	Polished Chrome	Polished Nickel	Champagne Bronze
MT2000-2	Decorative Bottle Trap with Clean-Out Plug	230	MT2000-2D/BRN	MT2000-2D/CPB	MT2000-2D/PN	MT2000-2D/CHBRZ
MT5003L-NL	Lever Handle Angle Valve	144	MT5003L-NLD/BRN	MT5003L-NLD/CPB	MT5003L-NLD/PN	MT5003L-NLD/CHBRZ
MT300	Classic 3-1/2" Deluxe Stemball Kitchen Strainer	41	MT300D/BRN	MT300D/CPB	MT300D/PN	MT300D/CHBRZ
MT200EV	Complete Stopper & Strainer Unit Waste Disposer Trim	45	MT200EVD/BRN	MT200EVD/CPB	MT200EVD/PN	MT200EVD/CHBRZ
MT202	Extended Flange Stopper & Strainer Unit Waste Disposer Trim	45	MT202D/BRN	MT202D/CPB	MT202D/PN	MT202D/CHBRZ
MT957R	Round Deluxe Raised Air Switch with Freedom Mount	31	MT957RD/BRN	MT957RD/CPB	MT957RD/PN	MT957RD/CHBRZ
MT1830-NL	Hot Water Faucet - Contemporary Round Body (90° Spout)	66	MT1830-NLD/PVDBRN	MT1830-NLD/CPB	MT1830-NLD/PVDPN	MT1830-NLD/CHBRZ
MT1840-NL	Hot Water Faucet - Contemporary Round Body	67	MT1840-NLD/PVDBRN	MT1840-NLD/CPB	MT1840-NLD/PVDPN	MT1840-NLD/CHBRZ
MT1831-NL	Hot & Cold Faucet - Contemporary Round Body (90° Spout)	78	MT1831-NLD/PVDBRN	MT1831-NLD/CPB	MT1831-NLD/PVDPN	MT1831-NLD/CHBRZ
MT1841-NL	Hot & Cold Faucet - Contemporary Round Body	79	MT1841-NLD/PVDBRN	MT1841-NLD/CPB	MT1841-NLD/PVDPN	MT1841-NLD/CHBRZ
MT1833-NL	Point-of-Use Faucet - Contemporary Round Body (90° Spout)	90	MT1833-NLD/PVDBRN	MT1833-NLD/CPB	MT1833-NLD/PVDPN	MT1833-NLD/CHBRZ
MT1843-NL	Point-of-Use Faucet - Contemporary Round Body	91	MT1843-NLD/PVDBRN	MT1843-NLD/CPB	MT1843-NLD/PVDPN	MT1843-NLD/CHBRZ
Products with Knurling						
MT1830-NL	Hot Water Faucet - Contemporary Round Body (90° Spout)	XX	MT1830-NLDK/PVDBRN	MT1830-NLDK/CPB	MT1830-NLDK/PVDPN	MT1830-NLDK/CHBRZ
MT1840-NL	Hot Water Faucet - Contemporary Round Body	XX	MT1840-NLDK/PVDBRN	MT1840-NLDK/CPB	MT1840-NLDK/PVDPN	MT1840-NLDK/CHBRZ
MT1831-NL	Hot & Cold Faucet - Contemporary Round Body (90° Spout)	XX	MT1831-NLDK/PVDBRN	MT1831-NLDK/CPB	MT1831-NLDK/PVDPN	MT1831-NLDK/CHBRZ
MT1841-NL	Hot & Cold Faucet - Contemporary Round Body	XX	MT1841-NLDK/PVDBRN	MT1841-NLDK/CPB	MT1841-NLDK/PVDPN	MT1841-NLDK/CHBRZ
MT1833-NL	Point-of-Use Faucet - Contemporary Round Body (90° Spout)	XX	MT1833-NLDK/PVDBRN	MT1833-NLDK/CPB	MT1833-NLDK/PVDPN	MT1833-NLDK/CHBRZ
MT1843-NL	Point-of-Use Faucet - Contemporary Round Body	XX	MT1843-NLDK/PVDBRN	MT1843-NLDK/CPB	MT1843-NLDK/PVDPN	MT1843-NLDK/CHBRZ

3a. Brushed Nickel - Find Prices & Order

Brushed Nickel	Price
MT2000-2D/BRN	\$ 461
MT5003L-NLD/BRN	\$ 208
MT300D/BRN	\$ 167
MT200EVD/BRN	\$ 171
MT202D/BRN	\$ 182
MT957RD/BRN	\$ 283
MT1830-NLD/PVDBRN	\$ 680
MT1840-NLD/PVDBRN	\$ 680
MT1831-NLD/PVDBRN	\$ 870
MT1841-NLD/PVDBRN	\$ 870
MT1833-NLD/PVDBRN	\$ 539
MT1843-NLD/PVDBRN	\$ 539
Products with Knurling	
MT1830-NLDK/PVDBRN	\$ 736
MT1840-NLDK/PVDBRN	\$ 736
MT1831-NLDK/PVDBRN	\$ 954
MT1841-NLDK/PVDBRN	\$ 954
MT1833-NLDK/PVDBRN	\$ 595
MT1843-NLDK/PVDBRN	\$ 595

3b. Polished Chrome - Find Prices & Order

Brushed Nickel	Price
MT2000-2D/CPB	\$ 461
MT5003L-NLD/CPB	\$ 208
MT300D/CPB	\$ 167
MT200EVD/CPB	\$ 171
MT202D/CPB	\$ 182
MT957RD/CPB	\$ 283
MT1830-NLD/CPB	\$ 680
MT1840-NLD/CPB	\$ 680
MT1831-NLD/CPB	\$ 870
MT1841-NLD/CPB	\$ 870
MT1833-NLD/CPB	\$ 539
MT1843-NLD/CPB	\$ 539
Products with Knurling	
MT1830-NLDK/CPB	\$ 736
MT1840-NLDK/CPB	\$ 736
MT1831-NLDK/CPB	\$ 954
MT1841-NLDK/CPB	\$ 954
MT1833-NLDK/CPB	\$ 595
MT1843-NLDK/CPB	\$ 595

3c. Polished Nickel - Find Prices & Order

Brushed Nickel	Price
MT2000-2D/PN	\$ 461
MT5003L-NLD/PN	\$ 208
MT300D/PN	\$ 167
MT200EVD/PN	\$ 171
MT202D/PN	\$ 182
MT957RD/PN	\$ 283
MT1830-NLD/PVDPN	\$ 680
MT1840-NLD/PVDPN	\$ 680
MT1831-NLD/PVDPN	\$ 870
MT1841-NLD/PVDPN	\$ 870
MT1833-NLD/PVDPN	\$ 539
MT1843-NLD/PVDPN	\$ 539
Products with Knurling	
MT1830-NLDK/PVDPN	\$ 736
MT1840-NLDK/PVDPN	\$ 736
MT1831-NLDK/PVDPN	\$ 954
MT1841-NLDK/PVDPN	\$ 954
MT1833-NLDK/PVDPN	\$ 595
MT1843-NLDK/PVDPN	\$ 595

3d. Champagne Bronze - Find Prices & Order

Brushed Nickel	Price
MT2000-2D/CHBRZ	\$ 461
MT5003L-NLD/CHBRZ	\$ 208
MT300D/CHBRZ	\$ 167
MT200EVD/CHBRZ	\$ 171
MT202D/CHBRZ	\$ 182
MT957RD/CHBRZ	\$ 283
MT1830-NLD/CHBRZ	\$ 680
MT1840-NLD/CHBRZ	\$ 680
MT1831-NLD/CHBRZ	\$ 870
MT1841-NLD/CHBRZ	\$ 870
MT1833-NLD/CHBRZ	\$ 539
MT1843-NLD/CHBRZ	\$ 539
Products with Knurling	
MT1830-NLDK/CHBRZ	\$ 736
MT1840-NLDK/CHBRZ	\$ 736
MT1831-NLDK/CHBRZ	\$ 954
MT1841-NLDK/CHBRZ	\$ 954
MT1833-NLDK/CHBRZ	\$ 595
MT1843-NLDK/CHBRZ	\$ 595

Look for the  icon to find products available in Duet Finishes throughout the 2020 Price Book

Bottle Traps



Deluxe Decorative Bottle Trap

MT1000

Our traditional style decorative lavatory bottle trap for exposed applications.

- Patented design with a heavy cast brass body
- Fully plated drain with 17 gauge tube
- 1-1/4" x 1-1/4" trap with 9" drain tube
- Includes flange and reducer seal to attach 1-1/4" drain tube to 1-1/2" wall drain
- IAPMO (UPC) Approved

Standard Finishes

MT1000/BRN	Brushed Nickel	\$ 253
MT1000/CHBRZ	Champagne Bronze	\$ 585
MT1000/CPB	Polished Chrome	\$ 214
MT1000/MB	Matte Black	\$ 416
MT1000/ORB	Oil Rubbed Bronze	\$ 372
MT1000/PN	Polished Nickel	\$ 253
MT1000/ULB	Unlacquered Brass	\$ 214
MT1000/VB	Venetian Bronze	\$ 372

Group 1 Finishes

All Group 1 Finishes \$ 416

Group 2 Finishes

All Group 2 Finishes \$ 585



Square Style Decorative Bottle Trap

MT3000

Our square style decorative lavatory bottle trap for exposed applications.

- Fully plated drain with 17 gauge tube
- 1-1/4" x 1-1/4" trap with 9" drain tube
- Includes flange and reducer seal to attach 1-1/4" drain tube to 1-1/2" wall drain
- IAPMO (UPC) Approved
- This the first square bottle trap to be approved in the USA

Standard Finishes

MT3000/BRN	Brushed Nickel	\$ 343
MT3000/CHBRZ	Champagne Bronze	\$ 615
MT3000/CPB	Polished Chrome	\$ 287
MT3000/MB	Matte Black	\$ 440
MT3000/ORB	Oil Rubbed Bronze	\$ 412
MT3000/PN	Polished Nickel	\$ 343
MT3000/ULB	Unlacquered Brass	\$ 287
MT3000/VB	Venetian Bronze	\$ 412

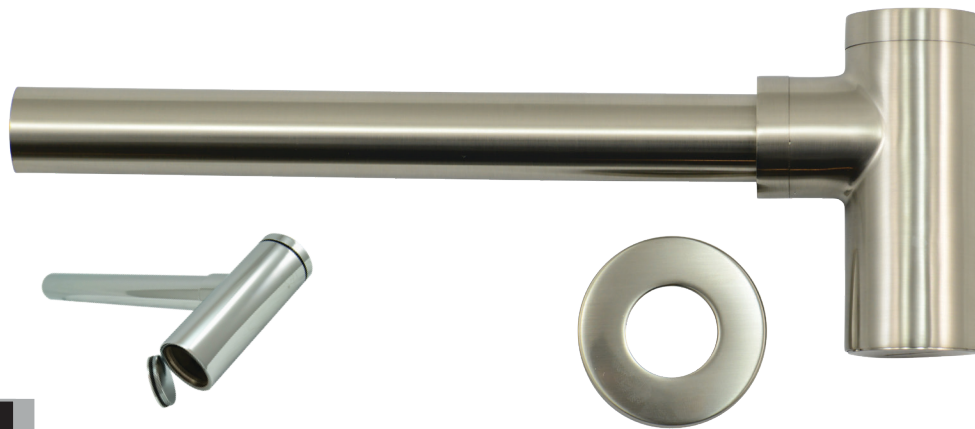
Group 1 Finishes

All Group 1 Finishes \$ 440

Group 2 Finishes

All Group 2 Finishes \$ 615

Bottle Traps



Comes with Clean-Out Plug

Round Style Decorative Bottle Trap with Clean-Out Plug

MT2000-2

Our round style decorative lavatory bottle trap for exposed applications.

- Fully plated drain with 17 gauge tube
- 1-1/4" x 1-1/4" trap with 11" drain tube
- Includes flange and reducer seal to attach 1-1/4" drain tube to 1-1/2" wall drain
- Drain body is 4-3/4" tall
- Patented feature eliminates long drain tubes from closing water seal

Standard Finishes

MT2000-2/BRN	Brushed Nickel	\$ 343
MT2000-2/CHBRZ	Champagne Bronze	\$ 615
MT2000-2/CPB	Polished Chrome	\$ 287
MT2000-2/MB	Matte Black	\$ 440
MT2000-2/ORB	Oil Rubbed Bronze	\$ 412
MT2000-2/PN	Polished Nickel	\$ 343
MT2000-2/ULB	Unlacquered Brass	\$ 287
MT2000-2/VB	Venetian Bronze	\$ 412

Group 1 Finishes

All Group 1 Finishes	\$ 440
----------------------	---------------

Group 2 Finishes

All Group 2 Finishes	\$ 615
----------------------	---------------

Duet Finishes

MT2000-2D/BRN	Brushed Nickel	\$ 461
MT2000-2D/CHBRZ	Champagne Bronze	\$ 461
MT2000-2D/CPB	Polished Chrome	\$ 461
MT2000-2D/PN	Polished Nickel	\$ 461

(Matte Black is the Base Color for All Duet Products)

For Complete Lavatory Supply Kits with Bottle Trap See Pages 169 - 174

Notes:

P-Traps



1-1/4" P-Trap - Traditional Style with High Box Flange

MT3140

A traditionally styled 1-1/4" x 1-1/4" Lavatory P-Trap.

- 17 gauge brass
- Includes High Box Flange

Consists of:

- 1 - MT301X 1-1/4" x 1-1/4" P-Trap
- 1 - MT314X 3" Diameter x 1-1/2" High Box flange

Standard Finishes

MT3140/BRN	Brushed Nickel	\$ 187
MT3140/CHBRZ	Champagne Bronze	\$ 356
MT3140/CPB	Polished Chrome	\$ 144
MT3140/MB	Matte Black	\$ 274
MT3140/ORB	Oil Rubbed Bronze	\$ 242
MT3140/PN	Polished Nickel	\$ 187
MT3140/ULB	Unlacquered Brass	\$ 144
MT3140/VB	Venetian Bronze	\$ 242

Group 1 Finishes

All Group 1 Finishes

Group 2 Finishes

All Group 2 Finishes

1-1/2" P-Trap - Traditional Style with High Box Flange

MT3130

A traditionally styled 1-1/2" x 1-1/2" Lavatory P-Trap.

- 17 gauge brass
- Includes High Box Flange

Consists of:

- 1 - MT302X 1-1/2" x 1-1/2" P-Trap
- 1 - MT313X 3" Diameter x 1-1/2" High Box flange
- Includes reducing washer to fit 1-1/4" tailpiece

Standard Finishes

MT3130/BRN	Brushed Nickel	\$ 187
MT3130/CHBRZ	Champagne Bronze	\$ 356
MT3130/CPB	Polished Chrome	\$ 144
MT3130/MB	Matte Black	\$ 274
MT3130/ORB	Oil Rubbed Bronze	\$ 242
MT3130/PN	Polished Nickel	\$ 187
MT3130/ULB	Unlacquered Brass	\$ 144
MT3130/VB	Venetian Bronze	\$ 242

Group 1 Finishes

All Group 1 Finishes **\$ 274**

Group 2 Finishes

All Group 2 Finishes **\$ 356**

Notes:

P-Traps



1-1/4" P-Trap - Traditional Style - No Flange

MT301X

A traditionally styled 1-1/4" x 1-1/4" Lavatory P-Trap.

- 17 gauge brass
- Flange not included - Use high box flange MT314X

Standard Finishes

MT301X/BRN	Brushed Nickel	\$ 160
MT301X/CHBRZ	Champagne Bronze	\$ 292
MT301X/CPB	Polished Chrome	\$ 122
MT301X/MB	Matte Black	\$ 229
MT301X/ORB	Oil Rubbed Bronze	\$ 198
MT301X/PN	Polished Nickel	\$ 160
MT301X/ULB	Unlacquered Brass	\$ 122
MT301X/VB	Venetian Bronze	\$ 198

Group 1 Finishes

All Group 1 Finishes **\$ 229**

Group 2 Finishes

All Group 2 Finishes **\$ 292**

1-1/2" P-Trap - Traditional Style - No Flange

MT302X

A traditionally styled 1-1/2" x 1-1/2" Lavatory P-Trap.

- 17 gauge brass
- Flange not included - Use high box flange MT313X
- Includes reducing washer to fit 1-1/2" x 1-1/4" tailpiece

Standard Finishes

MT302X/BRN	Brushed Nickel	\$ 160
MT302X/CHBRZ	Champagne Bronze	\$ 292
MT302X/CPB	Polished Chrome	\$ 122
MT302X/MB	Matte Black	\$ 229
MT302X/ORB	Oil Rubbed Bronze	\$ 198
MT302X/PN	Polished Nickel	\$ 160
MT302X/ULB	Unlacquered Brass	\$ 122
MT302X/VB	Venetian Bronze	\$ 198

Group 1 Finishes

All Group 1 Finishes **\$ 229**

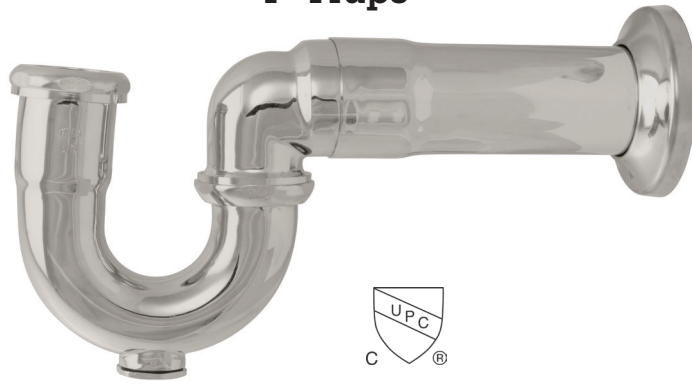
Group 2 Finishes

All Group 2 Finishes **\$ 292**

For Complete Lavatory Supply Kits with P-Trap See Pages 174 - 183

Notes:

P-Traps



New England/Massachusetts P-Trap

MT304X

A traditionally styled design that meets the requirements of the Commonwealth of Massachusetts plumbing codes. 1-1/2" Lavatory P-Trap with Clean-Out.

- 17 gauge brass
- 1-1/4" inlet x 1-1/2" PVC outlet
- Includes reducing washer to fit 1-1/4" tailpiece
- Trap includes cover tube for 1-1/2" PVC pipe and flange
- High box flange and PVC/ABS adaptors included
- MASS Approved
- IAPMO cUPC Approved

Standard Finishes

MT304X/BRN	Brushed Nickel	\$ 197
MT304X/CHBRZ	Champagne Bronze	\$ 378
MT304X/CPB	Polished Chrome	\$ 155
MT304X/MB	Matte Black	\$ 270
MT304X/ORB	Oil Rubbed Bronze	\$ 231
MT304X/PN	Polished Nickel	\$ 197
MT304X/ULB	Unlacquered Brass	\$ 155
MT304X/VB	Venetian Bronze	\$ 231

Group 1 Finishes

All Group 1 Finishes **\$ 270**

Group 2 Finishes

All Group 2 Finishes **\$ 378**

**For Complete Lavatory Supply Kits with
New England/Massachusetts P-Trap See Pages 184 - 195**

Notes:

P-Traps



1-1/2" P-Trap - Traditional Style - with Clean-Out Plug

MT305X

A traditionally styled 1-1/2" x 1-1/2" Lavatory P-Trap with Clean-Out.

- 17 gauge brass
- Flange not included - Use high box flange MT313X
- Includes reducing washer to fit 1-1/4" tailpiece
- IAPMO cUPC Approved

Standard Finishes

MT305X/BRN	Brushed Nickel	\$ 197
MT305X/CHBRZ	Champagne Bronze	\$ 378
MT305X/CPB	Polished Chrome	\$ 155
MT305X/MB	Matte Black	\$ 270
MT305X/ORB	Oil Rubbed Bronze	\$ 231
MT305X/PN	Polished Nickel	\$ 197
MT305X/ULB	Unlacquered Brass	\$ 155
MT305X/VB	Venetian Bronze	\$ 231

Group 1 Finishes

All Group 1 Finishes \$ 270

Group 2 Finishes

All Group 2 Finishes \$ 378



1-1/2" P-Trap - Traditional Style with Clean-Out Plug & High Box Flange

MT315X

A traditionally styled 1-1/2" x 1-1/2" Lavatory P-Trap with Clean-Out.

- 17 gauge brass
- Includes High Box flange

Consists of:

- 1 - MT305X 1-1/2" x 1-1/2" P-Trap with Clean-Out
- 1 - MT313X 3" Diameter x 1-1/2" High Box flange
- Includes reducing washer to fit 1-1/4" tailpiece

Standard Finishes

MT315X/BRN	Brushed Nickel	\$ 223
MT315X/CHBRZ	Champagne Bronze	\$ 439
MT315X/CPB	Polished Chrome	\$ 176
MT315X/MB	Matte Black	\$ 313
MT315X/ORB	Oil Rubbed Bronze	\$ 272
MT315X/PN	Polished Nickel	\$ 223
MT315X/ULB	Unlacquered Brass	\$ 176
MT315X/VB	Venetian Bronze	\$ 272

Group 1 Finishes

All Group 1 Finishes \$ 313

Group 2 Finishes

All Group 2 Finishes \$ 439



24" Lavatory Drain Extension

MT301X24

A traditionally styled 24" Lavatory Extension Arm for 1-1/4" x 1-1/4" P-Trap model MT301X

- 17 gauge brass
- Flange not included

MT302X24

A traditionally styled 24" Lavatory Extension Arm for 1-1/2" x 1-1/2" P-Trap model MT302X

- 17 gauge brass
- Flange not included

Standard Finishes

MT301X24/BRN	MT302X24/BRN	Brushed Nickel	\$ 230
MT301X24/CHBRZ	MT302X24/CHBRZ	Champagne Bronze	\$ 433
MT301X24/CPB	MT302X24/CPB	Polished Chrome	\$ 159
MT301X24/MB	MT302X24/MB	Matte Black	\$ 307
MT301X24/ORB	MT302X24/ORB	Oil Rubbed Bronze	\$ 246
MT301X24/PN	MT302X24/PN	Polished Nickel	\$ 230
MT301X24/ULB	MT302X24/ULB	Unlacquered Brass	\$ 159
MT301X24/VB	MT302X24/VB	Venetian Bronze	\$ 246

Group 1 Finishes

All Group 1 Finishes **\$ 307**

Group 2 Finishes

All Group 2 Finishes **\$ 433**

1-1/4" & 1-1/2" High Box Flange

MT314X

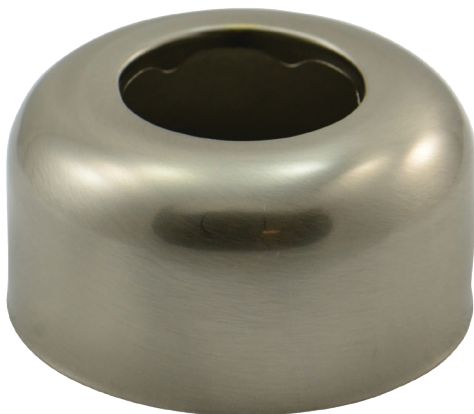
A 1-1/4" high box flange for 1-1/4" I.D. P-Traps

- 3" O.D. x 1-1/4" I.D. x 1-3/4" HT.
- Brass

MT313X

A 1-1/2" high box flange for 1-1/2" I.D. P-Traps

- 3" O.D. x 1-1/2" I.D. x 1-3/4" HT.
- Brass



Standard Finishes

MT314X/BRN	MT313X/BRN	Brushed Nickel	\$ 26
MT314X/CHBRZ	MT313X/CHBRZ	Champagne Bronze	\$ 61
MT314X/CPB	MT313X/CPB	Polished Chrome	\$ 21
MT314X/MB	MT313X/MB	Matte Black	\$ 43
MT314X/ORB	MT313X/ORB	Oil Rubbed Bronze	\$ 41
MT314X/PN	MT313X/PN	Polished Nickel	\$ 26
MT314X/ULB	MT313X/ULB	Unlacquered Brass	\$ 21
MT314X/VB	MT313X/VB	Venetian Bronze	\$ 41

Group 1 Finishes

All Group 1 Finishes **\$ 43**

Group 2 Finishes

All Group 2 Finishes **\$ 61**



Waste Pipe for Deluxe, Round, & Square Bottle Traps

MT406

This 1-1/4" O.D. x 16" long waste arm is designed for the deluxe, round, and square bottle traps. Use when the standard supplied waste arm is too short for your application.

- 17 gauge brass
- Flange not included
- Use with lavatory trap model numbers MT1000, MT2000-2, and MT3000

Standard Finishes

MT406/BRN	Brushed Nickel	\$ 124
MT406/CHBRZ	Champagne Bronze	\$ 221
MT406/CPB	Polished Chrome	\$ 72
MT406/MB	Matte Black	\$ 156
MT406/ORB	Oil Rubbed Bronze	\$ 140
MT406/PN	Polished Nickel	\$ 124
MT406/ULB	Unlacquered Brass	\$ 72
MT406/VB	Venetian Bronze	\$ 140

Group 1 Finishes

All Group 1 Finishes **\$ 156**

Group 2 Finishes

All Group 2 Finishes **\$ 221**



Space Saving Trap for Lavatory Sinks

MTSSTLAV **\$30**

- By raising the tailpiece and redirecting the P-Trap to the back of the cabinet, you ensure maximum storage space
- Kit includes everything needed to hook up a lavatory sink

Notes:

