

# Hospitality Luxury Collection

*your design,  
finished.*



[www.mountainplumbing.com](http://www.mountainplumbing.com)

A McAlpine Company   
**Mountain**  
Plumbing Products

# Content

**1 - 2**

Table of Contents **1**  
About Our Collection / Finishes **2**

**3 - 6**

Bath Waste and Overflow + Drains **3 - 4**  
Angle Valves and Parts **5 - 6**

**7 - 10**

Lavatory Traps **7 - 8**  
Lavatory Drains **9 - 10**

**11 - 14**

Shower Heads **11 - 12**  
Shower Arms **13 - 14**

**15 - 18**

Handshowers and Accessories **15 - 18**

## About Our Hospitality Luxury Collection

The Hospitality Luxury Collection has been created to put the finishing touch on your design project. Mountain Plumbing Products has gathered our designer bathroom plumbing products into this collection to help you complete this final step. Instead of leaving the selection of these parts to the plumbing contractor, choose from multiple high-end designs and six popular finishes to match every fixture in the room.

Guests and buyers alike expect luxury, where attention to detail is paramount. Every aspect of their stay or purchase will be important and you want to make sure to exceed each expectation. With this in mind, see how this collection of plumbing products from Mountain Plumbing Products can be used to give style to the more often overlooked areas of the bathroom. Please explore the products to incorporate into your hospitality project, while remembering that we make "your design, finished".

Bruce Reidel

President, Mountain Plumbing Products



BRN



CPB



MB



ORB



PN



VB

## Finishes

BRN - Brushed Nickel

CPB - Polished Chrome

MB - Matte Black

ORB - Oil Rubbed Bronze

PN - Polished Nickel

VB - Venetian Bronze

# Bath Waste and Overflow



## **BDR20SBR22**

### **Brass Body Cable Operated Bath Waste & Overflow Drain with Patented Flexible Overflow Neck**

- 1-1/2" 17 Gauge Tube
- Patented Flexible Overflow Neck swivels and conforms to any angle bathtub
- Patented Immerse Feature allows for an additional 2" of soaking depth in the tub
- Vertical Pipe 12" to 22"
- Horizontal Pipe 7" to 13"
- IAPMO cUPC Approved



## **BDWUNV22**

### **Soft Toe Touch Style Bath Waste & Overflow Drain (Brass Body)**

- 1-1/2" 17 Gauge Tube
- Brass body drain with slim design overflow cover
- Rigid Overflow Neck
- Includes 3" tailpiece
- Includes EZ-Click™ trim kit with lifetime warranty on drain mechanism
- Designer face plate features no exposed screws
- Patented Immerse Feature allows for an additional 2" of soaking depth in the tub
- Vertical pipe 20" - 26"
- Horizontal pipe 5" - 14"
- IAPMO cUPC Approved



## **MT506C**

### **4" Square Complete Shower Drain**

- 4" Square Grid
- Solid Nickel Bronze Grid Top
- Cast Iron Rough
- Fits 2" Pipe





# Angle Valves and Parts



## MT403-NL

### 1/4 Turn Angle Ball Valve

- 1/2" Compression (5/8" O.D.) Inlet x 3/8" O.D. Compression Outlet
- IAPMO cUPC Approved



## MT5003L-NL

### 1/4 Ceramic Disc Cartridge Valve

- 1/2" Compression (5/8" O.D.) Inlet x 3/8" O.D. Compression Outlet
- IAPMO cUPC Approved



## MT621-NL

### 1/4 Turn Angle Ball Valve

- 1/2" Compression (5/8" O.D.) Inlet x 3/8" O.D. Compression Outlet
- IAPMO cUPC Approved



## MT4003X-NL

### 1/4 Turn Ceramic Disc Cartridge Valve

- 1/2" Compression (5/8" O.D.) Inlet x 3/8" O.D. Compression Outlet
- IAPMO cUPC Approved



## MT6004-NL

### 1/4 Turn Ceramic Disc Cartridge Valve

- 1/2" Compression (5/8" O.D.) Inlet x 3/8" O.D. Compression Outlet
- IAPMO cUPC Approved



## MT5004-NL

### 1/4 Turn Ceramic Disc Cartridge Valve

- 1/2" Compression (5/8" O.D.) Inlet x 3/8" O.D. Compression Outlet
- IAPMO cUPC Approved



## MT431X (12") | MT432X (20")

### Bull Nose Supply Tube For Lavatory

- Rigid Supply Tube
- 3/8" O.D.
- Lead Free Material
- Can be hand formed for installation, but a spring bender is recommended



## MT435X (12") | MT436 (20")

### Flat Head Riser Supply Tube For Toilet

- Rigid Supply Tube
- 3/8" O.D.
- Plastic end piece
- Lead Free Material
- Can be hand formed for installation, but a spring bender is recommended

# Lavatory Traps



## MT3140

### 1-1/4" x 1-1/4" Lavatory P-Trap

- Constructed of 17 gauge brass
- Includes High Box flange
- IAPMO cUPC Approved

## MT3130

### 1-1/2" x 1-1/2" Lavatory P-Trap

- Constructed of 17 gauge brass
- Includes High Box flange
- IAPMO cUPC Approved



## MT1000

### Deluxe Decorative Bottle Trap

- Patented design with a heavy cast brass body
- Fully plated drain with 17 gauge tube
- 1-1/4" x 1-1/4" trap with 9" drain tube
- Includes flange and reducer seal to attach 1-1/4" drain tube to 1-1/2" wall drain
- IAPMO (UPC) Approved



Comes with Clean-Out Plug

## MT315X

### 1-1/2" x 1-1/2" Lavatory P-Trap with Clean-Out Plug

- 17 gauge brass
- Flange not included - Use high box flange MT313X
- Includes reducing washer to fit 1-1/4" tailpiece
- IAPMO cUPC Approved

## MT304X

### New England Style P-Trap

- 17 gauge brass
- 1-1/4" inlet x 1-1/2" PVC outlet
- Includes reducing washer to fit 1-1/4" tailpiece
- Trap includes cover tube for 1-1/2" PVC pipe and flange
- High box flange and PVC/ABS adaptors included
- MASS Approved
- IAPMO cUPC Approved

## MT2000-2

### Round Style Decorative Bottle Trap with Clean-Out Plug

- Fully plated drain with 17 gauge tube
- 1-1/4" x 1-1/4" trap with 11" drain tube
- Includes flange and reducer seal to attach 1-1/4" drain tube to 1-1/2" wall drain
- Drain body is 4-3/4" tall
- Patented feature eliminates long drain tubes from closing water seal
- IAPMO (UPC) Approved



# Lavatory Drains



## MT734

### 20 Hole Grid Drain with Overflow

- Fully plated brass
- Patented "Fast Flow Angle Top"
- No clogging or puddling of water
- Eliminates water spots
- Tailpiece measures 8" Long x 1-1/4" O.D.
- Drain Opening 1-1/2" diameter
- 2-1/2" Threaded Drain Body
- Comes with Overflow
- IAPMO cUPC Approved



## MT735

### 20 Hole Grid Drain without Overflow

- Fully plated brass
- Patented "Fast Flow Angle Top"
- No clogging or puddling of water
- Eliminates water spots
- Tailpiece measures 8" Long x 1-1/4" O.D.
- Drain Opening 1-1/2" diameter
- 4" Threaded Drain Body
- Comes without Overflow
- IAPMO cUPC Approved



## MT741

### EZ-CLICK™ Lavatory Drain with Overflow

- Fully plated brass
- Tailpiece measures 8" Long x 1-1/4" O.D.
- Drain Opening 1-1/2" diameter
- 2-1/2" Drain Body
- Comes with Overflow
- IAPMO cUPC Approved



## MT742

### EZ-CLICK™ Lavatory Drain without Overflow

- Fully plated brass
- Tailpiece measures 8" Long x 1-1/4" O.D.
- Drain Opening 1-1/2" diameter
- 4" Drain Body
- Comes without Overflow
- IAPMO cUPC Approved



## MT745-2

### Dome Style EZ-CLICK™ Lavatory Drain with Overflow

- Fully plated brass
- Tailpiece measures 8" Long x 1-1/4" O.D.
- Drain Opening 1-1/2" diameter
- 4" Drain Body
- Max Sink 2-1/4" Thick
- Comes without Overflow
- IAPMO (UPC) Approved



## MT745-3

### Dome Style EZ-CLICK™ Lavatory Drain with Overflow

- Fully plated brass
- Tailpiece measures 8" Long x 1-1/4" O.D.
- Drain Opening 1-1/2" diameter
- 4" Drain Body
- Max Sink 2-1/4" Thick
- Come with Overflow
- IAPMO (UPC) Approved



## MT749-3

### Tear Drop Pattern Lavatory Grid Drain with Overflow

- Fully plated brass
- Tailpiece measures 8" Long x 1-1/4" O.D.
- Drain Opening 1-1/2" diameter
- 4" Threaded Drain Body
- Comes With Overflow
- IAPMO cUPC Approved



Mountain Plumbing Products / Hospitality Luxury Collection

# Shower Heads



## MT28

### Round Shower Riser

- Available in 12" and 16" Sizes
- Solid Brass Construction
- Wall Mount
- 9" Vertical Rise
- 1/2"NPT
- 2-7/16" Decorative Round Brass Escutcheon



## MT29

### Square Shower Riser

- Available in 12" and 16" Sizes
- Solid Brass Construction
- Wall Mount
- 8-1/2" Vertical Rise
- 1/2"NPT
- 2" Decorative Square Brass Escutcheon



## MT18

### Traditional Round Rain Head

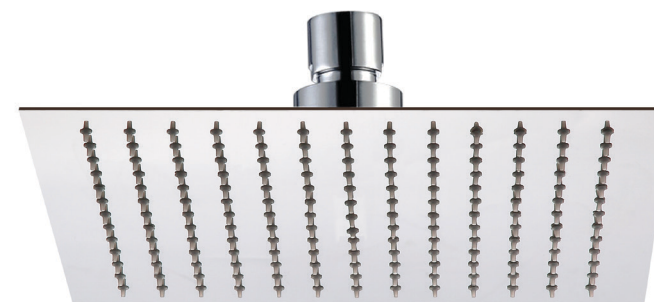
- Available in 8" and 10" Sizes
- Solid Brass Construction
- Clog free nozzles
- 1/2" IPS swivel ball joint for angle adjustment
- 1.6 GPM (2.5 GPM restrictor also included)



## MT10

### Contemporary Round Rain Head

- Available in 6", 8", 10", 12", and 16" Sizes
- Seamless Stainless Steel Construction
- Ultra Slim 2.4mm
- Clog Free Nozzles
- 1/2" IPS swivel ball joint for angle adjustment
- 1.6 GPM (2.5 GPM restrictor also included)



## MT11

### Contemporary Square Rain Head

- Available in 6", 8", 10", 12", and 16" Sizes
- Seamless Stainless Steel Construction
- Ultra Slim 2.4mm
- Clog Free Nozzles
- 1/2" IPS swivel ball joint for angle adjustment
- 1.6 GPM (2.5 GPM restrictor also included)

# Shower Arms

## MT20



### Shower Arm w/ 45° Bend

- Available in 6", 8", 12" Sizes
- Solid Brass Construction
- Wall Mount
- 45° Bend
- 1/2"NPT
- 2-7/16" Decorative Round Brass Escutcheon

## MT21



### Square Shower Arm w/ 45° Bend

- Available in 6", 8", 12" Sizes
- Solid Brass Construction
- Wall Mount
- 45° Bend
- 1/2"NPT
- 2" Decorative Square Brass Escutcheon

## MT22



### Curved Round Wall Rain Arm

- Available in 12" and 16" Sizes
- Solid Brass Construction
- Wall Mount
- 90° Bend
- 1/2"NPT
- 2-7/16" Decorative Round Brass Escutcheon

## MT23



### Curved Square Wall Rain Arm

- Available in 12" and 16" Sizes
- Solid Brass Construction
- Wall Mount
- 90° Bend
- 1/2"NPT
- 2" Decorative Square Brass Escutcheon

## MT24



### Round 90° Wall Rain Arm

- Available in 12" and 16" Sizes
- Solid Brass Construction
- Wall Mount
- 90° Bend
- 1/2"NPT
- 2-7/16" Decorative Round Brass Escutcheon

## MT25



### Square 90° Wall Rain Arm

- Available in 12" and 16" Sizes
- Solid Brass Construction
- Wall Mount
- 90° Bend
- 1/2"NPT
- 2" Decorative Square Brass Escutcheon

## MT30

### Round Ceiling Drop

- Available in 3", 6", 8", 12", 18", and 24" Sizes
- Solid Brass Construction
- Ceiling Mount
- 1/2"NPT
- 2-7/16" Decorative Round Brass Escutcheon



## MT31

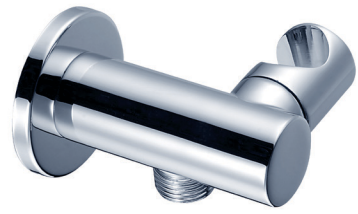
### Square Ceiling Drop

- Available in 3", 6", 8", 12", 18", and 24" Sizes
- Solid Brass Construction
- Ceiling Mount
- 1/2"NPT
- 2" Decorative Square Brass Escutcheon





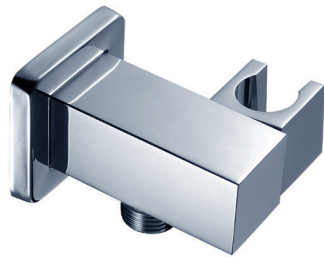
# Handshowers and Accessories



## MT41S

### Round Waterway Elbow with Adjustable Handshower Holder

- Solid Brass Construction
- Round Flange Included



## MT51S

### Square Waterway Elbow with Adjustable Handshower Holder

- Solid Brass Construction
- Square Flange Included



## MT71S

### Traditional Waterway Elbow with Adjustable Handshower Holder

- Solid Brass Construction
- Round Flange Included



## MT12HS

### Round Slim Hand Shower Wand

- Solid Brass Construction
- Single function



## MT13HS

### Rectangular Slim Hand Shower Wand

- Solid Brass Construction
- Single function



## MT17

### Stainless Steel Handshower Hose

- Stainless Steel Hose
- Solid Brass 1/2" Female Connectors
- Five Foot Length





Mountain Plumbing Products / Hospitality Luxury Collection

# Shower Rails



## **MT9SRW**

### **Round Shower Rail with Bottom Outlet Integral Waterway**

- Integral water outlet eliminates the need for separate waterway elbow
- Brass construction
- 27" in length
- Handshower holder is adjustable in height and angle
- Mounting hardware included



## **MT8SRW**

### **Rectangular Shower Rail with Bottom Outlet Integral Waterway**

- Integral water outlet eliminates the need for separate waterway elbow
- Brass construction
- 27" in length
- Handshower holder is adjustable in height and angle
- Mounting hardware included

## **MTRRP**

### **Retrofit Shower Rail with Bottom Outlet Integral Waterway**

- Top water inlet to retrofit current shower setup
- Bottom diverter to switch from Showerhead to Handshower
- Brass construction
- Handshower holder is adjustable in height and angle
- Mounting hardware included

*your design,  
finished.*

[www.mountainplumbing.com](http://www.mountainplumbing.com)



PO Box 630008  
Irving, TX 75063

[projects@mountainplumbing.com](mailto:projects@mountainplumbing.com)